

MacWAIS

User Manual

MacWAIS User Manual

Version 1.29

Document No. EINet-0020-0294

Copyright © 1993, 1994 Microelectronics and Computer Technology Corporation (MCC). All rights reserved. Permission to use and reproduce this documentation for internal purposes is granted to EINet subscribers under the following conditions:

- No right is granted to transmit or externally distribute this documentation to non-EINet subscribers.
- EINet subscribers may modify and distribute this documentation to other EINet subscribers as long as this copyright notice and permission notice are included.
- All reproductions shall include this copyright notice and permission notice.

Macintosh® is a registered trademark of Apple Computer, Inc.

Microsoft® is a registered trademark of Microsoft Corporation.

WAIS™ is a trademark of WAIS, Inc.

All other trademarks or registered trademarks are property of their respective owners.

The U.S. Department of State and the U.S. Department of Commerce have approved the export of MacWAIS software solely for the purpose of User Authentication, but not the encryption of (user) data streams.

United States law prohibits disposition of these commodities to the Soviet Bloc, Libya, Laos, the People's Republic of China, North Korea, Vietnam, Cambodia, or Cuba unless otherwise authorized by the United States.

This document was produced using Microsoft® Word.

MCC EINet
3500 West Balcones Center Drive
Austin, TX 78759-6509
USA

Email: einet-info@einet.net

Contents

1 Introduction.....	5
MacWAIS – What is it?.....	5
What is needed to run MacWAIS?.....	5
How much disk space?.....	5
Which System/Finder?.....	6
What’s in the rest of this Manual?.....	6
2 Overview.....	7
How does MacWAIS fit in?.....	7
3 Installation.....	7
4 A Quick Tour.....	8
5 MacWAIS Reference.....	17
The Apple Menu.....	17
About MacWAIS.....	17
The File Menu.....	18
New Question.....	18
Clone Question.....	18
Open Question.....	18
Close.....	18
Save.....	19
Save As.....	19
Revert.....	19
Page Setup.....	19
Print.....	19
Preferences.....	19
Quit.....	20
The Preferences Dialog.....	21
The Select Folder Dialog.....	25
The Edit Menu.....	26
Undo.....	26
Cut.....	26
Copy.....	26
Paste.....	26
Clear.....	26
Launchers.....	26
Find.....	26
Find Again.....	27

4 *MacWAIS User Manual*

The Edit Launchers Dialog.....	28
New.....	28
Edit.....	28
Delete.....	28
Enable.....	29
Disable.....	29
The Edit Launcher Dialog.....	30
The Sources Menu.....	32
New.....	32
Edit.....	32
Select.....	32
The Edit Source Dialog.....	34
The Select Sources Dialog.....	36
The Text Menu.....	38
Add Section As Feedback.....	38
The Windows Menu.....	39
MacWAIS Help.....	39
The Question Window.....	40
The Multi-Type Dialog.....	43

Welcome to MacWAIS. This chapter briefly tells you what MacWAIS is, what equipment you need to run it, and what information is covered in the remainder of this manual.

MacWAIS – What is it?

MacWAIS is an application that allows you to find, retrieve, and intelligently process information via the WAIS protocol. MacWAIS is also EInet-authentication savvy, so it is capable of communicating with EInet-secured WAIS servers. (See *EInet Manager for the Macintosh User Manual* for more details on EInet authentication.)¹

What is needed to run MacWAIS?

MacWAIS is intended to run on all Macintosh platforms. It is recommended that you run MacWAIS with at least 4M RAM. Because MacWAIS is a TCP/IP-based network application, it also requires MacTCP 1.1 or newer.

How much disk space?

The distribution, `MacWAIS1.29.SEA`, is a self-extracting Compact Pro™ archive that contains the following:

- two README files: one named `README` (which provides information about the current release), and the other `README.shareware` (which provides legal/license information),
- the MacWAIS application, `MacWAIS`,
- a WAIS Question entitled `EInet Shareware` (that'll get you information about shareware available from EInet),
- the User Manual you're currently reading (`MacWAIS User Manual`), as well as a text-only version (`MacWAIS User Manual (text)`),
- a folder named `wais-sources`, that contains the following two Source files: `Directory of Servers` and `EInet Directory of Servers`.

`MacWAIS1.29.SEA` is 325K² in size. When extracted and decompressed, `MacWAIS` (383K), `README.EInet` (.5K), and the `wais-sources` folder and its contents (3K) take up ~387K on your disk. This total does not reflect the Preferences File, or retrieved Source or Document files created as part of MacWAIS's execution.

¹The shareware version of MacWAIS is *not* EInet-authentication savvy. The secure version of MacWAIS and EInet Manager for the Macintosh are available exclusively to EInet customers.

²These file sizes are approximate in nature, and apply only to the secure version of MacWAIS.

Which System/Finder?

Use the latest System and Finder provided by Apple. MacWAIS requires at least System 6.0.7. Certain features of MacWAIS are System 7-specific (e.g., Document launching). On non-System 7 platforms these features are simply not invokeable.

What's in the rest of this Manual?

The remainder of this manual provides:

- a brief overview of WAIS and the part MacWAIS plays within it,
- instructions for installing MacWAIS, and, finally,
- detailed descriptions of all of the MacWAIS commands.

2 Overview

Wide Area Information Servers, or *WAIS*, contains three basic parts:

- servers – the indexers and retrievers of sets of information (referred to as *Sources*),
- clients – the user’s front-end for querying the Jan 13, 2023 information fronted by servers (i.e., “asking” *Questions*), and
- a standard protocol (Z39.50) – the mechanism through which clients and servers communicate.

How does MacWAIS fit in?

MacWAIS is just one of several WAIS client programs that are available. Few, however, run on the Macintosh. And none, except MacWAIS, combine Document launching (i.e., the ability to invoke a particular program based on the WAIS type of the Document being retrieved) and the ability to communicate with secure servers.

For more information on WAIS, see either of the following documents from the public domain WAIS release: *overview.txt*, or *wais-concepts.txt*.

3 Installation

Installation of MacWAIS is as easy as double-clicking on the distribution archive, MacWAIS1.29.SEA. The archive contents may be stored anywhere you choose.

4 A Quick Tour

Let's find some information with MacWAIS! For the sake of example, let's find weather information for Austin (Texas).

First, launch MacWAIS. Do this by double-clicking on the MacWAIS icon. At this stage, you'll see an empty, unnamed Question Window and the Select Sources Dialog as shown in Figure 4.1.1.

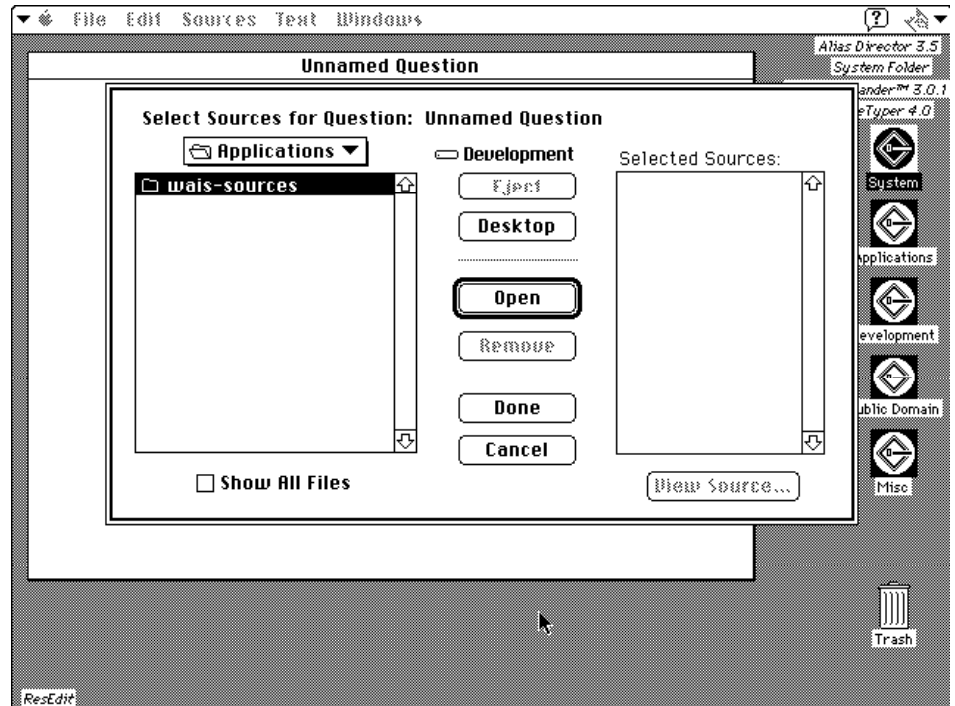


Figure 4.1.1 MacWAIS – After Launching

Next we must find a Source that knows about weather. This can be done by “asking” the Directory of Servers Source about weather. First, we must locate the folder that contains WAIS Sources. In this case, it happens to be the only folder currently listed (i.e., `wais-sources`). The contents of this folder may be listed by clicking on the Open button, or by pressing Return or Enter. The contents of the `wais-sources` folder are shown in Figure 4.1.2.

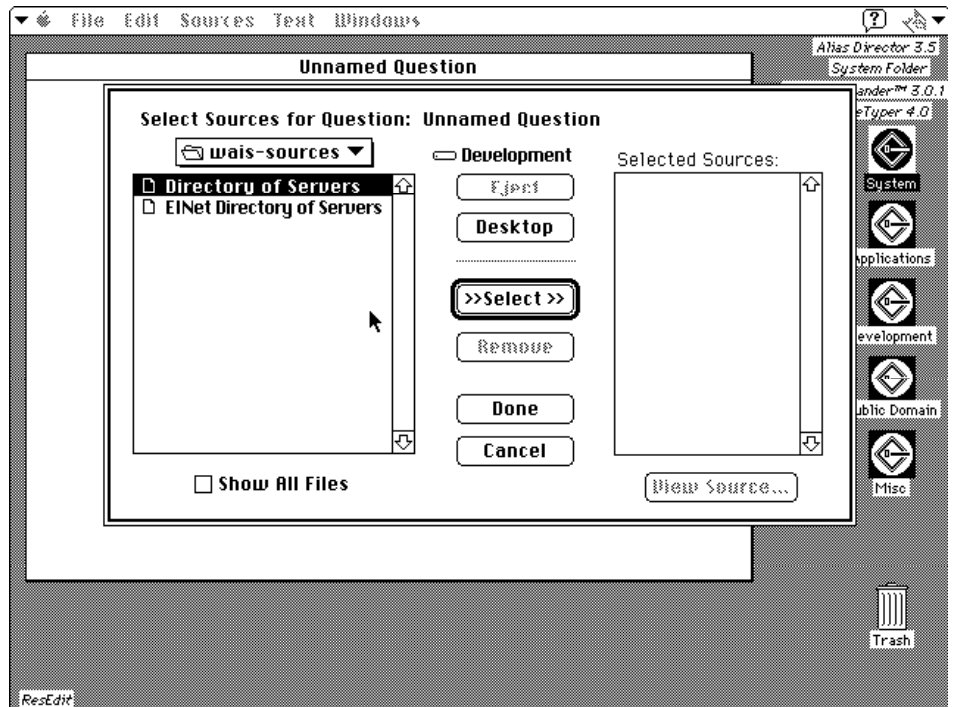


Figure 4.1.2 MacWAIS – After Locating `wais-sources` Folder

The Select Sources Dialog allows you to specify one or more Sources for use by this new, unnamed Question (i.e., *of whom* the Question will be asked). It will be displayed every time you open a new Question.

Note

A default Source may be selected for use with new Questions via the **File Preferences...** command.

To add `Directory of Servers` to the list of selected sources (located on the right side of the Select Sources Dialog) highlight it, by clicking the mouse on it once, and mark it for use with the current Question by clicking the Select button (or pressing Return or Enter).

Tip

An unmarked Source may be marked for use by simply double-clicking on it.

Figure 4.1.3 shows the Select Sources Dialog after selecting Directory of Servers. (Notice the appearance of Directory of Servers in the list on the right-hand side of the dialog entitled Selected Sources. This indicates it has been selected for use by the current Question.)

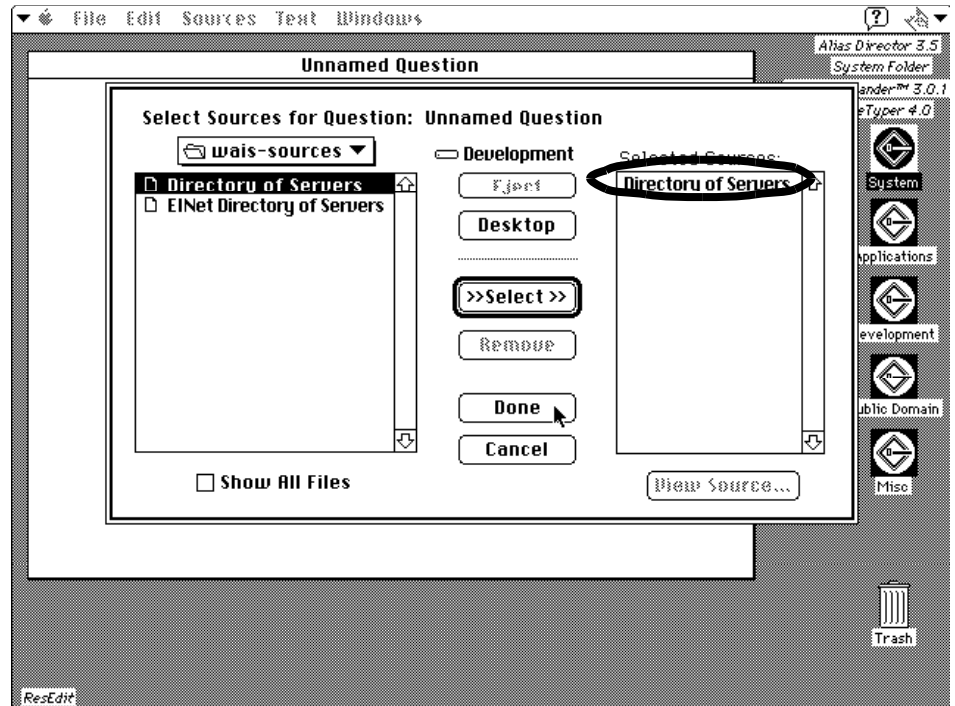


Figure 4.1.3 MacWAIS – After Selecting Directory of Servers

To update the current Question with your Source selection, click the Done button. At this stage, the Question Window will be updated, as shown below in Figure 4.1.4, indicating that the Directory of Servers Source was selected. Notice also that the window title has changed – it now has a preceding bullet (‘•’) – indicating that the Question has been modified.

Note

The Selected Sources Popup, displayed by pressing the shadowed button with the downward-facing triangle, shows the names of all of the Sources selected for use by this Question.

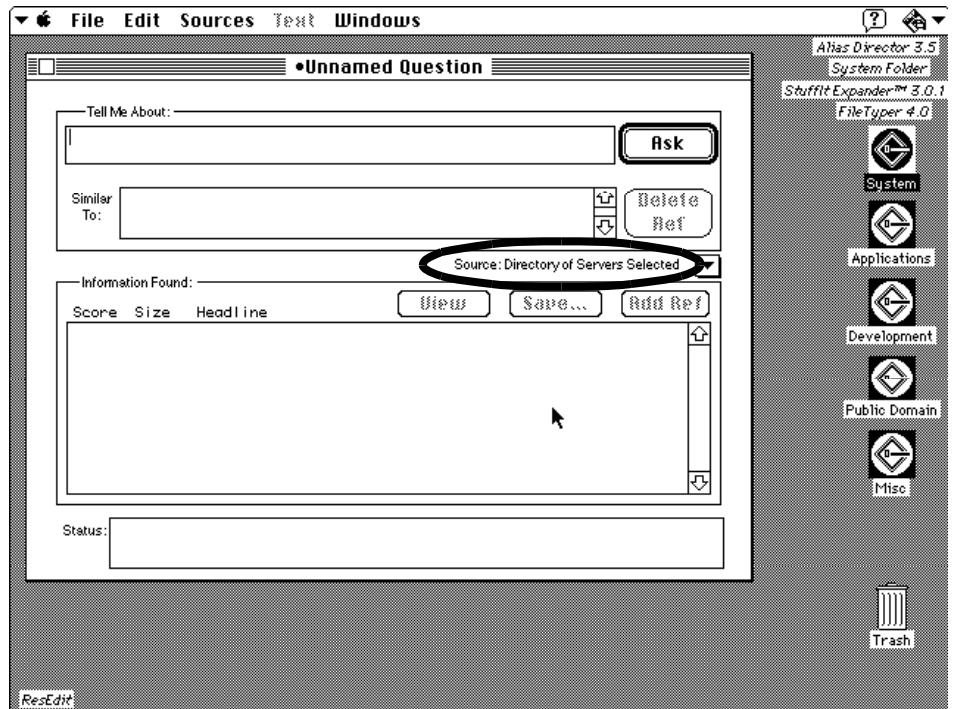


Figure 4.1.4 MacWAIS – After Selecting Directory of Servers

To ask the selected Source about weather, simply type *weather* (which you’ll see echoed in the “Tell Me About:” box as shown in Figure 4.1.5), and click on the Ask button (or press Return or Enter).

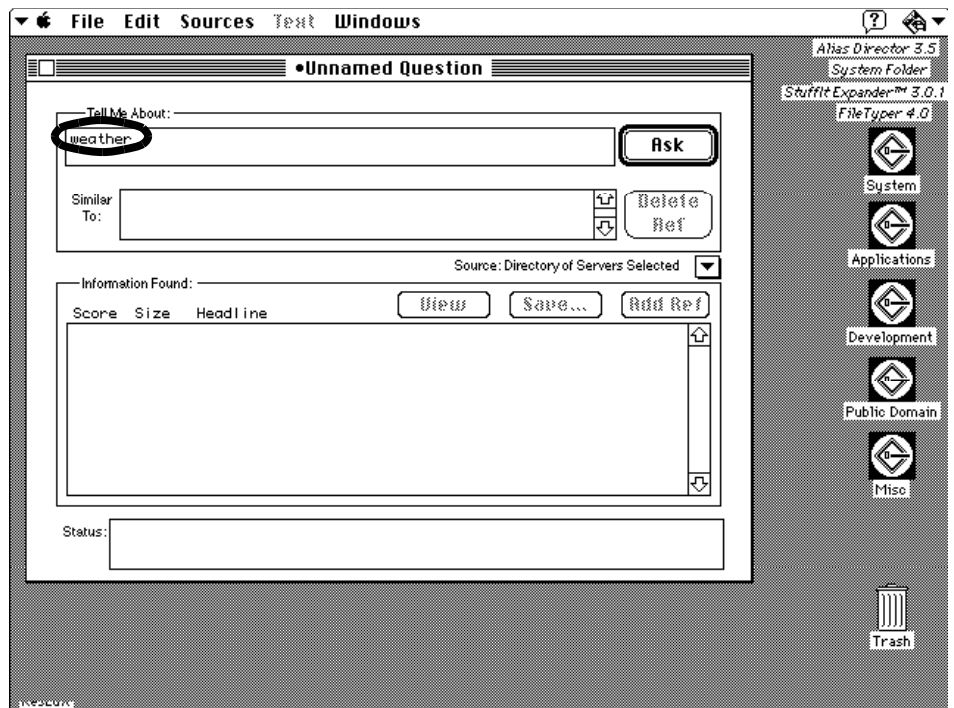


Figure 4.1.5 MacWAIS – After Typing weather

While MacWAIS is “asking” Directory of Servers about weather, you should see several status messages (in the Status box near the bottom of the Question Window) as shown in Figure 4.1.5, and the cursor should turn into a spinning globe. After receiving a successful response, you should see several Result Documents (in this case three) in the “Information Found:” box as shown in Figure 4.1.5.

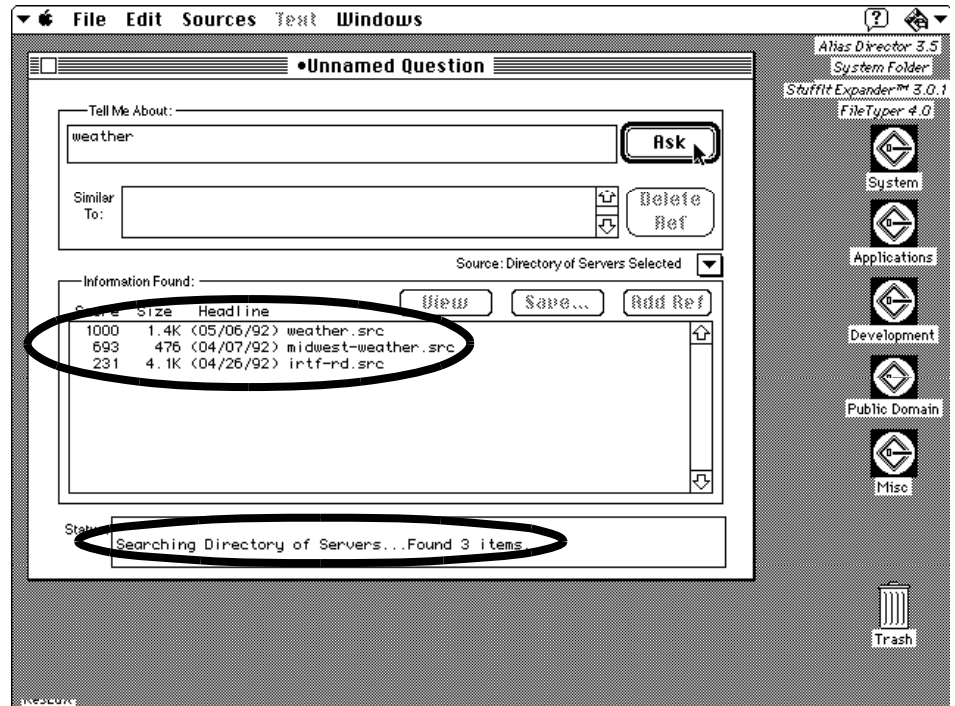


Figure 4.1.5 MacWAIS – After Searching Directory of Servers

To view the Result Document named `weather.src` (shown in Figure 4.1.5 as the first Document in the list) simply click on it once (which will highlight it and enable the View button) and click on the View button.

Tip

A Result Document may be viewed by simply double-clicking on it.

During the retrieval of this (or any) Document, you might see the Transfer Progress Dialog shown in Figure 4.1.7a. This Dialog is displayed depending on *how long* the transfer takes. Short transfers, big or small, don't bother displaying this Dialog. Long transfers, on the other hand, do. This Dialog indicates how the transfer is progressing by simply filling the bar according to the percentage of the Document that has been transferred.

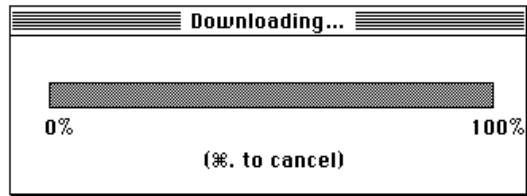


Figure 4.1.7a Transfer Progress Dialog

For cases where the length of the document is not known (e.g., multi-type documents), you might see a textual version of the Transfer Progress Dialog as shown in Figure 4.1.7b.

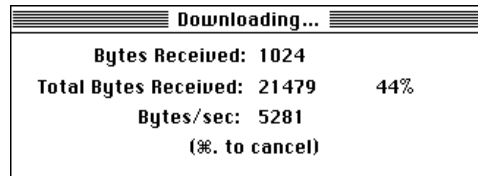


Figure 4.1.7b Textual Transfer Progress Dialog

Note

You can switch between the Textual and non-Textual (i.e., graphical bar) versions of the Transfer Progress Dialog by clicking the mouse anywhere on the dialog.

After retrieving `weather.src`, you'll see the Edit Source Dialog displaying information about `weather.src` as shown in Figure 4.1.8.

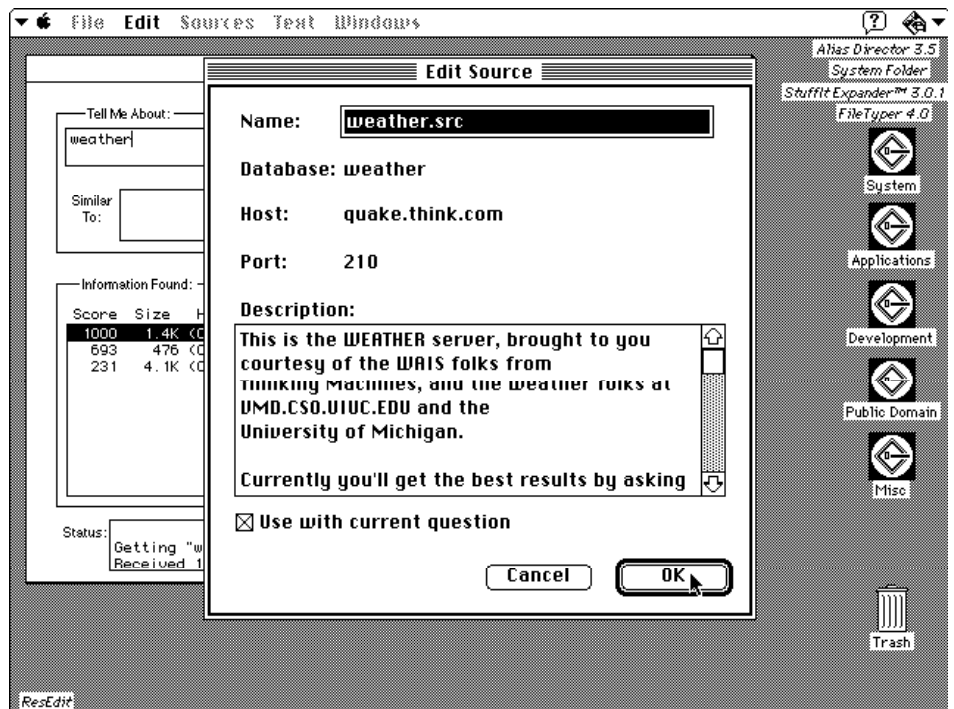


Figure 4.1.8 MacWAIS – Editing `weather.src`

Notice that the only thing you can edit about this source is its name.

Check the “Use with current question” option (this will save you from having to explicitly select it later), and click the OK button.

At this stage, you’ll be prompted for where and under what name this Source should be saved via the standard Macintosh Save Dialog as shown in Figure 4.1.9. Initially, the name will be that specified in the Retrieved Source Dialog shown earlier in Figure 4.1.8.

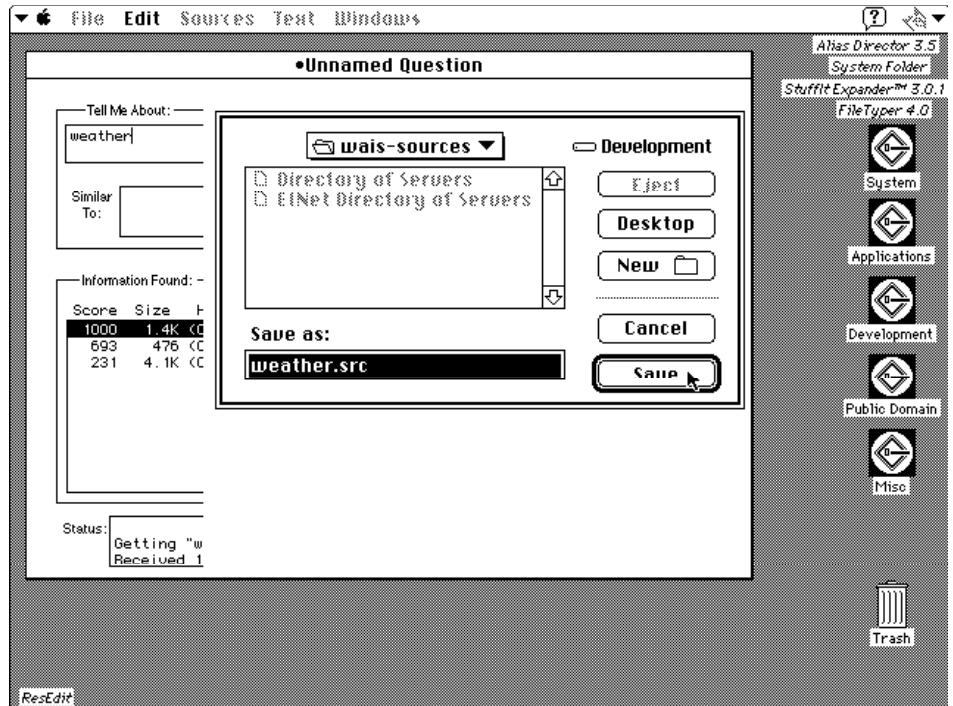


Figure 4.1.9 MacWAIS – Saving weather.src

After dismissing the Save Dialog (by clicking on the Save button), notice that the Question Window has been updated to indicate that `weather.src` was selected, and that the previous “Tell Me About:” text is now highlighted as shown in Figure 4.1.10. (Highlighting the previous “Tell Me About:” text allows you to overwrite it by simply typing new text.)

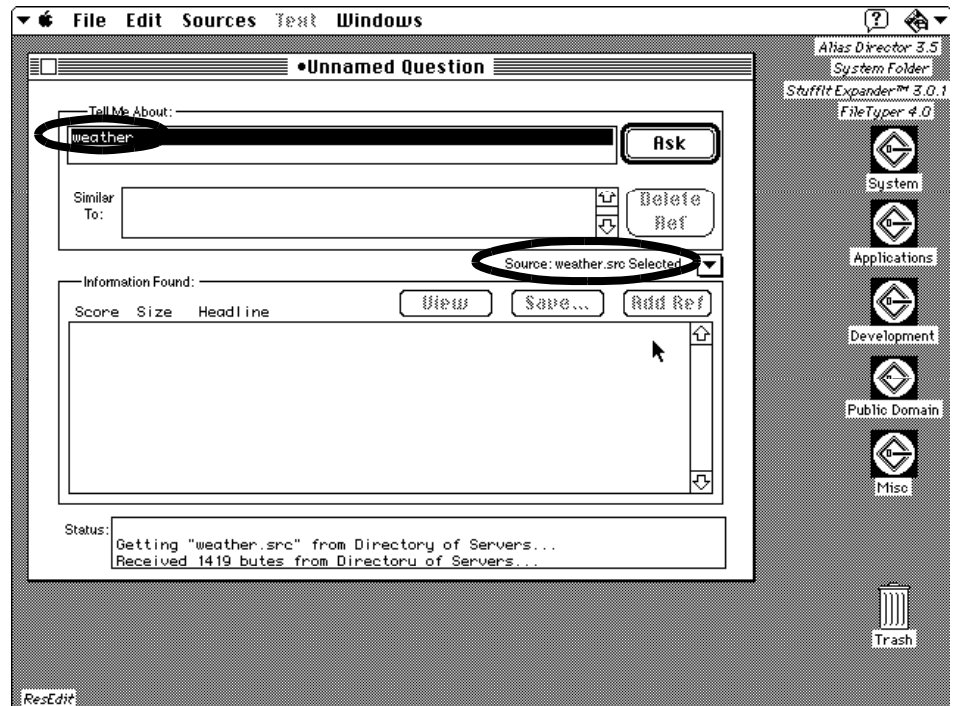


Figure 4.1.10 MacWAIS – After Selecting `weather.src`

To ask the newly selected Source about weather in Austin, simply type `austin`, and click on the Ask button. While MacWAIS is “asking” `weather.src` about `austin`, you should again see several status messages, and the cursor should again turn into a spinning globe.

After receiving a successful response, you should see a single Result Document entitled `Austin-TX.txt` in the “Information Found:” box as shown in Figure 4.1.11.

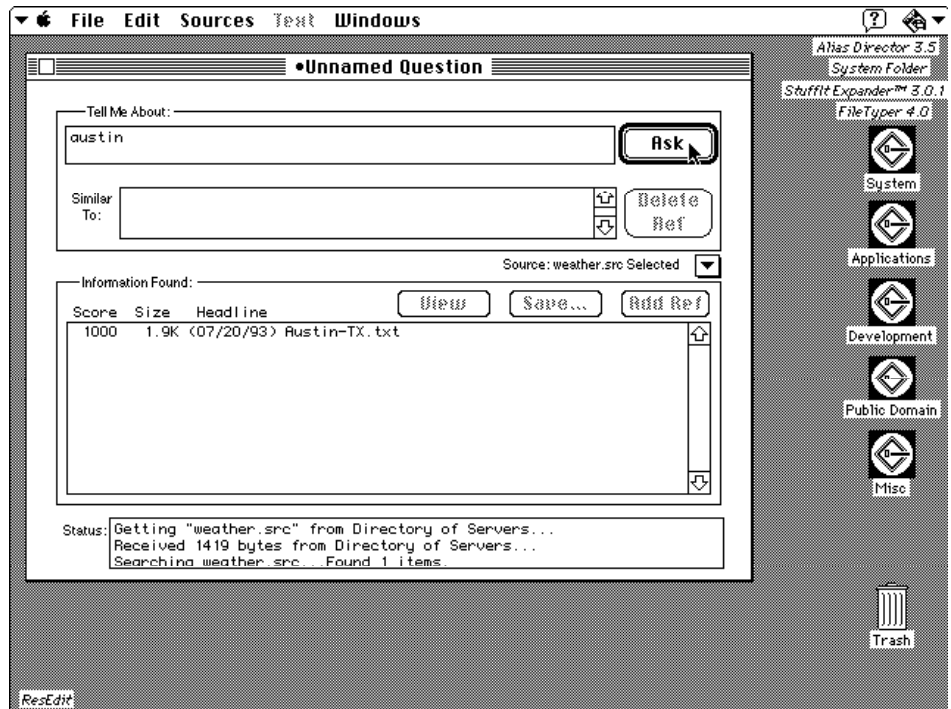


Figure 4.1.11 MacWAIS – After Searching weather.src

To view this Document (Austin-TX.txt) simply double-click on it. You'll then see a Text Document Window viewing it as shown in Figure 4.1.12.

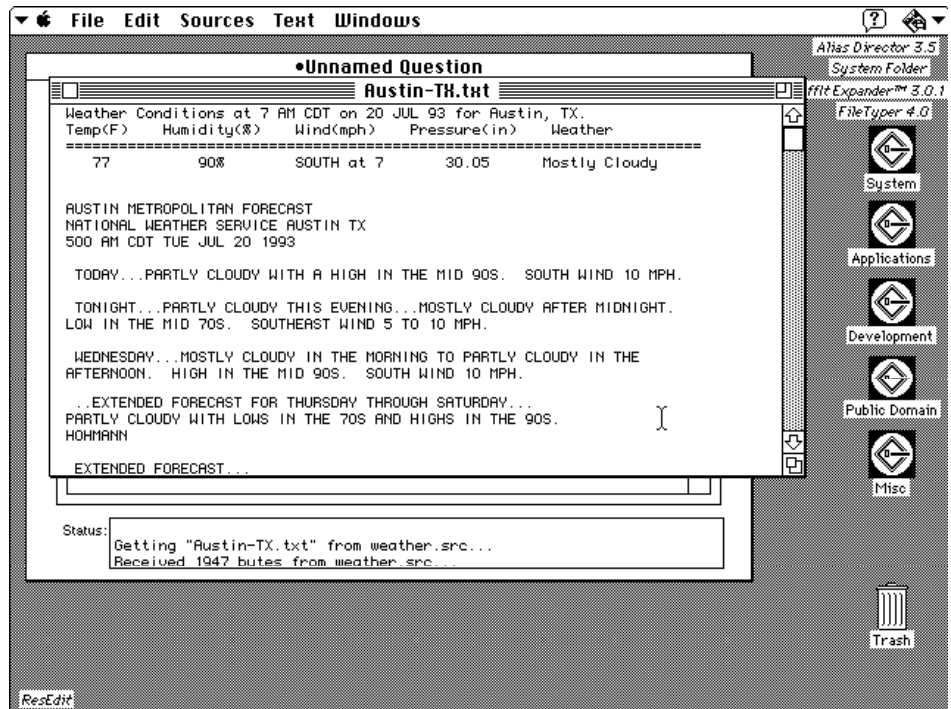


Figure 4.1.12 MacWAIS – Viewing Austin-TX.txt

And there you have it – the MacWAIS Tour!

5 MacWAIS Reference

The following sections describe each of the MacWAIS commands as they're available either from menus, or directly from the Question Window.

The Apple Menu

The Apple Menu, shown in Figure 5.1.1, provides a single MacWAIS command for displaying information about the MacWAIS application itself.



Figure 5.1.1 The Apple Menu

About MacWAIS...

This command displays information about the MacWAIS application. Among other things, it displays MacWAIS's version.

The File Menu

The File Menu, shown in Figure 5.2.1, provides commands for opening new and previously saved Questions, cloning Questions, saving Questions and retrieved Text Documents, closing Question and Text Document Windows, editing printer setup, printing retrieved Text Documents, editing Preferences, and quitting MacWAIS. The following paragraphs will describe each of these commands in more detail.

File	
New Question	⌘N
Clone Question	
Open Question...	⌘O

Close	⌘W
Save	⌘S
Save As...	
Revert	

Page Setup...	
Print...	⌘P

Preferences...	

Quit	⌘Q

Figure 5.2.1 The File Menu

New Question

This command opens a new Question Window. If the “Default Source for New Question” Preference has not been set, then the Select Sources Dialog will automatically appear. Otherwise, the new Question will have its Source set to that specified by the “Default Source for New Question” Preference. See the section entitled *The Preferences Dialog* for more details on the “Default Source for New Question” Preference.

Clone Question

This command opens a new Question Window whose contents are copied from the current Question Window.

Tip

Clone Question may be invoked by pressing command-option-N.

Open Question...

This command opens a Question that was previously saved to disk. You will be presented with a standard open dialog box from which you can select the Question to be opened.

Close

This command closes the currently active Question or Text Document Window. If the currently active window is a Question Window that has been modified, and if the “Query to Save Dirty Questions and Sources” Preference is set (which is the default), then you’ll see a dialog box similar to the one shown in Figure 5.2.2.

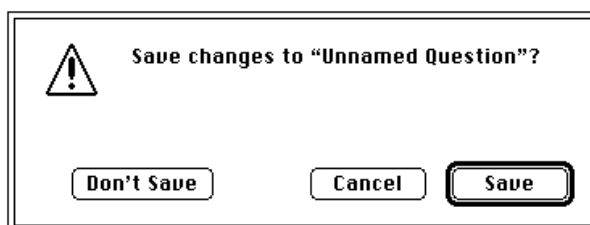


Figure 5.2.2 The Save Dirty Question/Source Dialog

This Dialog is giving you a chance to save (or not) a dirty Question before it is closed.

Tip

The Jan 13, 2023 Close command may be invoked forcing the suppression of the Save Dirty Question/Source Dialog (independent of the “Query to Save Dirty Questions and Sources” Preference) by pressing command-option-W.

- | | |
|-------------------|---|
| Save | This command saves the contents of the currently active Question or Text Document Window. If the currently active window has not been previously saved, then this command acts just like the Save As... command described below. |
| Save As... | This command saves the contents of the currently active window to disk. You will be presented with a standard save dialog that will allow you to specify the filename and folder in which the data should be saved. |
| Revert | This command restores the contents of the currently active Question Window to those last saved to disk. |
-
- Note**
- Revert** only applies to Question Windows that:
- (a) have been modified since being opened, and
 - (b) represent previously saved Questions.
-
- | | |
|-----------------------|--|
| Page Setup... | This command displays the standard Page Setup dialog that lets you edit the current printer setup parameters (e.g., specify the size of paper you’re printing on). |
| Print... | This command prints the contents of the currently active Text Document Window. You will be presented with a standard print dialog that will allow you to specify such things as the number of copies to print, page range, etc. |
| Preferences... | This command lets you edit MacWAIS’s Preferences. When you select this command, you’ll see a dialog box similar to the one shown later in Figure 5.3.1. The section entitled <i>The Preferences Dialog</i> will explain this dialog box in more detail. |

This command quits the MacWAIS application.

Warning

Quitting MacWAIS will close all open windows. See the **Close** command description above, and the “Query to Save Dirty Questions and Sources” Preferences description below for more details.

Tip

All open windows may be closed and the application quit without query by pressing command-option-Q.

The Preferences Dialog

The Preferences Dialog, shown in Figure 5.3.1, allows you to view and optionally edit MacWAIS Preferences. It is displayed by selecting the **Preferences...** command from the File menu.

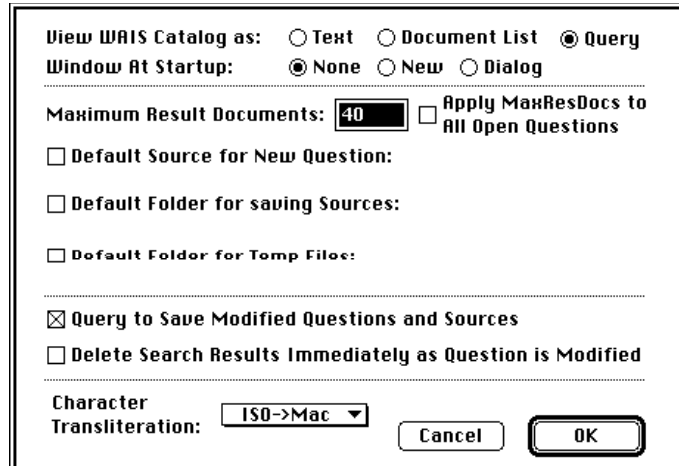


Figure 5.3.1 The Preferences Dialog

The “View WAIS Catalog as:” radio button gives you a choice of viewing WAIS Catalog Documents as either text, as a list of Documents, or to query the user to choose between the two (the default). If it is viewed as text, then it is displayed in a separate Text Document Window (i.e., it is treated as any other WAIS Document of type `TEXT`). If it is viewed as a list of Documents, then the WAIS Catalog is parsed and each of the Documents described therein (up to the Maximum Result Documents limit) is displayed as a Result Document in a *new* Question Window (cloned from the current Question Window) as if your query had resulted in each of these Documents. If the “View WAIS Catalog as:” Preference is set to Query (again, the default), then the user is asked, via the Multi-Type Dialog, to choose between “View As Text” and “View As Document List”.

Tip

To choose between Catalog Document viewing options (i.e., Text and Document Lists), press command-option when Viewing a Catalog Document.

The “Window At Startup:” radio button gives you a choice of the Question Window that is to be opened when the application is started. If the “None” option is selected, which is the default, then no window will initially be opened. If the “New” option is selected, then a new Question Window will initially be opened. (This is as if you had selected the “New Question” option from the File menu. See the Section entitled *The File Menu* for more details.) If the “Dialog” option is selected, then the Open Question dialog will be presented.

(This is as if you had selected the “Open Question” option from the File menu. See the Section entitled *The File Menu* for more details.)

The “Maximum Result Documents” field specifies the maximum number of Result Documents that a Server is to return in response to a query. This value, the default of which is 40, is applied to new Questions at the time that they’re initially opened.

If the “Apply MaxResDocs to All Open Questions” check box is checked, then all open Questions will be updated to reflect the “Maximum Result Documents” value.

The “Default Source for New Question” check box allows you to specify the default Source to be used by all subsequent new Questions (at the time they’re initially opened). If unchecked, which is the default, then opening a new Question will immediately display the Select Sources Dialog shown later in Figure 5.9.1. Checking this box will immediately display the Select Sources Dialog giving you the opportunity to identify the Source that is to be designated the default Source for use in new Questions. See the section entitled *The Select Sources Dialog* for more details on selecting a Source.

After selecting an initial Source, the space to the right of the “Default Source for New Question” check box will be updated to display the name of the selected Source as exemplified in Figure 5.3.2.

Default Source for New Question: EINet Directory of Servers

Figure 5.3.2 The “Default Source for New Question” Check Box

If an initial Source is not selected from the Select Sources Dialog, then the “Source for New Question” check box will remain unchecked.

Note

To change a selection you must click the “Default Source for New Question” check box twice.

The “Default Folder for saving Sources” check box allows you to specify the folder in which newly created and retrieved Sources should automatically be saved. If unchecked, which is the default, then attempting to save a newly defined or retrieved Source will require you to specify the folder in which the Source should be saved. (This will occur *every* time you save a Source!) Checking this box will immediately display the Select Folder Dialog, shown later in Figure 5.4.1, giving you the opportunity to identify the folder in which new and retrieved Sources should be saved. See the section entitled *The Select Folder Dialog* for more details on selecting a Sources folder.

After selecting a default folder, the space to the right of the “Default Folder for saving Sources” check box will be updated to display the name of the selected folder as exemplified in Figure 5.3.3.

Default Folder for saving Sources: wais-sources

Figure 5.3.3 The “Default Folder for saving Sources” Check Box

Note

To change a selection you must click the “Default Folder for saving Sources” check box twice.

The “Default Folder for Temp Files” check box allows you to specify the folder in which documents, retrieved for the purposes of viewing, should automatically be saved. (Use this Preference, for example, to store the MacWAIS application on a read-only Appleshare volume.) If this Preference is unchecked, which is the default, then retrieved documents will be saved in the folder from which MacWAIS was started. Checking this box will immediately display the Select Folder Dialog, shown later in Figure 5.4.1, giving you the opportunity to identify the folder in which retrieved documents should be saved. See the section entitled *The Select Folder Dialog* for more details on selecting a Temp Files folder.

After selecting a default folder, the space to the right of the “Default Folder for Temp Files” check box will be updated to display the name of the selected folder as exemplified in Figure 5.3.4.

Default Folder for Temp Files: wais-documents

Figure 5.3.4 The “Default Folder for Temp Files” Check Box

Note

To change a selection you must click the “Default Folder for Temp Files” check box twice.

The “Query to Save Dirty Questions and Sources” check box specifies how modifications to Question Windows (that have occurred since they were opened) and Sources (that have occurred since they were last saved to disk) should be handled. If checked, then you’ll be asked, via the Save Dirty Source/Question Dialog shown earlier in Figure 5.2.2, whether or not the modifications should be saved before they are discarded. Otherwise, modifications are automatically discarded.

The “Delete Search Results Immediately as Question is Modified” check box specifies *when* Result Documents (i.e., the fruits of a successful query) are discarded. If checked, then they’re discarded the instant the Question is modified. Otherwise, they’re discarded only when either a new search is initiated or the Source(s) to be queried are changed. By default, this option is not checked.

The “Character Transliteration” popup menu specifies how extended characters (i.e., characters ≥ 128) are mapped into Macintosh characters. The default is “ISO->Mac” which is an ISO-1 Latin

mapping. Other options include “fr->Mac” (French), “se->Mac” (Swedish), and so on. An option is selected by simply clicking on the popup menu and choosing the desired transliteration from the menu.

Note

Character Transliteration maps are stored as ‘cmap’ resources. Additional maps can be added by simply adding ‘cmap’ resources to either MacWAIS or its Preferences file. ‘cmap’ resource number 128 is the default map (which is “ISO->Mac”). Modifying this map (by either editing it directly or by renumbering resources) will effectively change MacWAIS’s default map.

The Select Folder Dialog

The Select Folder Dialog, shown in Figure 5.4.1, allows you to select the folder in which new and retrieved sources will automatically be saved. It is displayed by clicking either of the “Default Folder for saving Sources” or “Default Folder for Temp Files” check boxes in the Preferences Dialog shown in Figure 5.3.1.

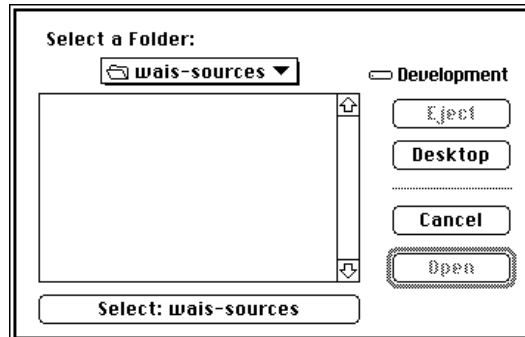


Figure 5.4.1 The Select Folder Dialog

This dialog is identical to the standard save dialog except for the addition of the folder selection button at the bottom of the dialog. In Figure 5.4.1, its title is `Select: wais-sources`. Clicking on this button will select the currently listed folder as the default folder. Note that the button’s title is updated with the name of the folder that is currently listed.

The Edit Menu

The Edit Menu, shown in Figure 5.5.1, provides not only the standard Macintosh editing commands, but also three MacWAIS-specific commands: **Launchers...**, **Find...**, and **Find Again**. The following paragraphs will describe all of these commands in more detail.

Edit	
Undo	⌘Z
Cut	⌘H
Copy	⌘C
Paste	⌘V
Clear	
Launchers...	⌘L
Find...	⌘F
Find Again	⌘G

Figure 5.5.1 The Edit Menu

Undo

This command undoes the last text editing command.

Cut

This command deletes the currently highlighted text and copies it to the paste buffer. This command will be dimmed when either the currently active window is a Text Document Window or there is no currently highlighted text.

Copy

This command copies the currently highlighted text to the paste buffer. This command will be dimmed if there is no currently highlighted text.

Paste

This command copies the contents of the paste buffer to the current text field. This command will be dimmed if either the currently active window is a Text Document Window or there is nothing in the paste buffer.

Clear

This command deletes the currently highlighted text. Note that it is not placed in the paste buffer as with Cut. This command will be dimmed if the currently active window is a Text Document Window.

Launchers...

This command allows you to edit MacWAIS's Document Launcher information. When you select this command, you'll see a dialog box similar to the one shown later in Figure 5.6.1. The section entitled *The Edit Launchers Dialog* will explain this dialog box in more detail.

Find...

This command brings up the Find Dialog shown in Figure 5.5.2.

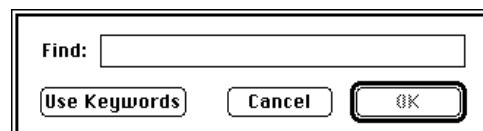


Figure 5.5.2 The Find Dialog

The Find Dialog allows you to specify words and/or phrases to be found in the current Text Document Window. Text separated by <option-space> constitutes *multiple* search words. For example, specifying

enterprise integration (i.e., the words “enterprise” and “integration” separated by a normal space) will find occurrences of the *phrase* “enterprise integration”. However, specifying enterprise<option-space>integration (i.e., the words “enterprise” and “integration” separated by <option-space>) will find occurrences of the *individual words* “enterprise” and “integration”.

Note

Searches are case-*insensitive*.

The “Use Keywords” button replaces the current Find text with the associated Question’s keywords parsed into words separated by <option-space> (which means each keyword is interpreted as a separate search word).

Find Again

This command continues searching through the current Text Document Window for the next occurrence of the previously specified search word(s). If no search words have been previously specified, then this command acts just like the Find... command described above.

The Edit Launchers Dialog

The Edit Launchers Dialog, shown in Figure 5.6.1, allows you to create, edit, and delete MacWAIS Launcher information. It is displayed by selecting the **Launchers...** command from the Edit menu.

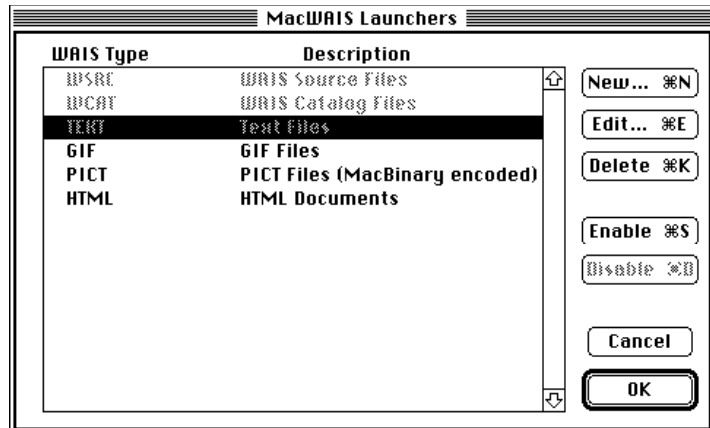


Figure 5.6.1 The Edit Launchers Dialog

Clicking on the Cancel button will discard all changes made. Clicking on the OK button will permanently update MacWAIS's Launcher information.

The Edit... and Delete buttons are dimmed until an existing Launcher is highlighted. In this case, they are not dimmed because the TEXT Launcher is highlighted.

The Enable and Disable buttons are never both on, and their respective dimmed states reflect whether or not the highlighted Launcher is enabled. In this case, the Disable button is dimmed because the highlighted Launcher, TEXT, is currently not enabled for launching (as evidenced by its gray text).

When the **New...** command is selected (either by clicking on the New... button or by pressing ⌘-N), you'll see the Edit Launcher Dialog shown later in Figure 5.7.1. It is initially blank. See the section entitled *The Edit Launcher Dialog* for more details.

When the **Edit...** command is selected (either by double-clicking on an existing Launcher, clicking on the Edit... button, by pressing ⌘-E, or by option-double-clicking a Result Document in a Question Window), you'll see the Edit Launcher Dialog shown later in Figure 5.7.1. It will be initially populated with information from the currently highlighted Launcher. See the section entitled *The Edit Launcher Dialog* for more details.

When the **Delete** command is selected (either by clicking on the Delete button, or by pressing ⌘-K), the currently highlighted Launcher is deleted.

When the **Enable** command is selected (either by clicking on the Enable button, or by pressing ⌘-?), the currently highlighted Launcher is enabled for launching. Notice that the Launcher's text changes from gray to black.

When the **Disable** command is selected (either by clicking on the Disable button, or by pressing ⌘-D), the currently highlighted Launcher is disabled for launching. Notice that the Launcher's text changes from black to gray.

Tip

You may toggle a Launcher's enabled state by option-double-clicking on it.

The Edit Launcher Dialog

The Edit Launcher Dialog, shown in Figure 5.7.1, allows you to define new Document launching information. It is displayed by clicking on either the New... or Edit... buttons in the Edit Launchers Dialog,, shown earlier in Figure 5.6.1, or by option-double-clicking on a Result Document in a Question Window shown later in Figure 5.13.1.

Specifically, the Edit Launcher Dialog lets you define:

- the mapping between WAIS Documents and Macintosh files (which enables MacWAIS to *save* WAIS Documents), and
- the mapping between WAIS Documents and Macintosh applications (which enables MacWAIS to launch applications to *view* WAIS Documents).

Figure 5.7.1 The Edit Launcher Dialog

The WAIS Type field specifies, as the name implies, the WAIS Document type (in this case TEXT).

The Description field is a user-specified description of this Document type (in this case Text Files).

The Type and Creator fields specify the Macintosh file type and creator that correspond to the specified WAIS type (in this case TEXT and ttxx, respectively). When a WAIS Document is retrieved and saved, the resulting Macintosh file that is created will have its type and creator attributes specified by these fields. For example, from the information shown above in Figure 5.7.1, a WAIS Document of type TEXT that is retrieved and saved will yield a Macintosh file of type TEXT and creator ttxx.(i.e., a TeachText file)

The “Choose Example...” button allows you to specify the Type and Creator fields by selecting an existing Macintosh file from a standard file open dialog box.

The “With Translation” popup specifies the type of translation that will be applied to the WAIS Document before it is processed or saved. Current choices include `None` and `MacBinary`.

The Signature field specifies the Macintosh application that will be launched to process this file. When the Creator field, above, is specified, the Signature field, if blank, is initialized to this value.

The “Choose Application...” button allows you to specify this field by choosing the desired Macintosh application from a standard file open dialog box.

The “Don’t Launch” check box indicates whether or not the Launcher is enabled. If checked, then the Launcher is not enabled; thus, MacWAIS will not launch the specified application when a WAIS Document of this type is retrieved (i.e., this type of Document can not be viewed). Note, however, that even though the Launcher may be disabled, the Document can still be saved.

The Sources Menu

The Sources Menu, shown in Figure 5.8.1, provides commands for defining new Sources, editing Sources, and selecting Sources for use with the currently active Question. The following paragraphs will describe all of these commands in more detail.

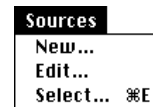


Figure 5.8.1 The Sources Menu

New...

This command allows you to define a new Source. When you select this command, you'll see a dialog box similar to the one shown later in Figure 5.9.1. It is initially blank except for the Name field which is set to `unnamed` and the Port field which is set to 210. The section entitled *The Edit Source Dialog* will explain this dialog in more detail.

Edit...

This command allows you to edit an existing Source. When you select this command, you'll see the Select Source Dialog shown in Figure 5.8.2.

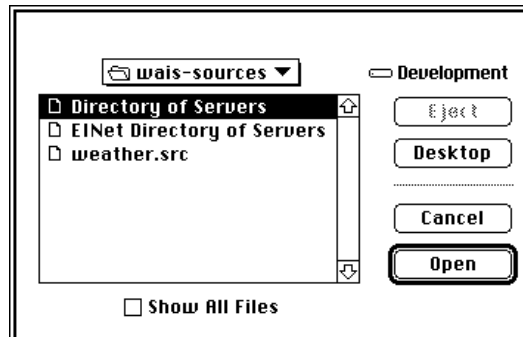


Figure 5.8.2 The Select Source Dialog

This dialog allows you to identify the Source that is to be edited. It is identical to the standard open dialog except for the addition of the "Show All Files" check box at the bottom of the dialog. With this box unchecked, only Source files created by MacWAIS will be shown. Checking this box will allow all files to be listed. (This is a good way for utilizing Source files from WAISStation or files that were ftp'd and didn't assume the proper creator.)

Once a file is selected, you'll see a dialog box similar to the one shown later in Figure 5.9.1. It is initially populated with information from the selected Source. See the section entitled *The Edit Source Dialog* for more details.

Select...

This command allows you to select Sources for use by the currently active Question. When you select this command, you'll see a dialog box similar to the one shown later in Figure 5.10.1. The section entitled *The Select Sources Dialog* will explain this dialog box in more detail.

Note

If there is no currently active Question then the **Select...** command will be disabled.

The Edit Source Dialog

The Edit Source Dialog, shown in Figure 5.9.1, allows you to edit MacWAIS Source information. It is displayed by selecting the **New...** or **Edit...** command in the Sources Menu, shown earlier in Figure 5.8.1, or by retrieving a Source, as shown in Figure 4.1.8.

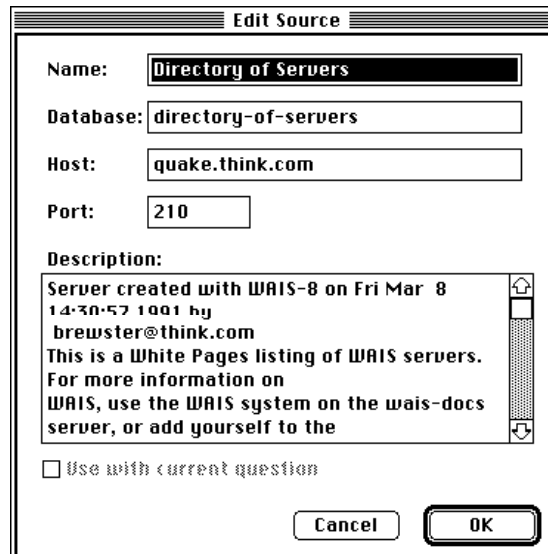


Figure 5.9.1 The Edit Source Dialog

The Name field specifies the name of the Macintosh file in which the Source information will be stored. Existing Sources that are being edited are saved in the folder from which the Source was originally selected (even if the Source is renamed). New Sources, however, are saved in the folder specified by the “Default Folder for saving Sources” Preference. If this Preference is unspecified, then you will see the standard Macintosh save dialog which offers you the opportunity to specify the name and folder in which the Source should be saved.

Note

In the case of retrieved Sources, only the Name field is editable.
Otherwise, all fields are editable.

The Database field specifies the Server-relative (path)name of the WAIS database.

The Host field specifies the hostname (either a DNS style name or an IP address) on which the Server is running.

The Port field specifies the port number on which the Server is “listening.” The default is 210.

Note

Leading and trailing blanks are automatically trimmed from the Host and Port fields.

The Description field is a textual description of the information offered by this Source.

The “Use with current question” check box, if checked, specifies that the currently active Question should be updated to use this Source *exclusively*. This option is only available if there is a currently active Question.

The Select Sources Dialog

The Select Sources Dialog, shown in Figure 5.10.1, allows you to select Sources for use by the currently active Question. It is displayed by selecting the **Select...** command from the Sources menu.

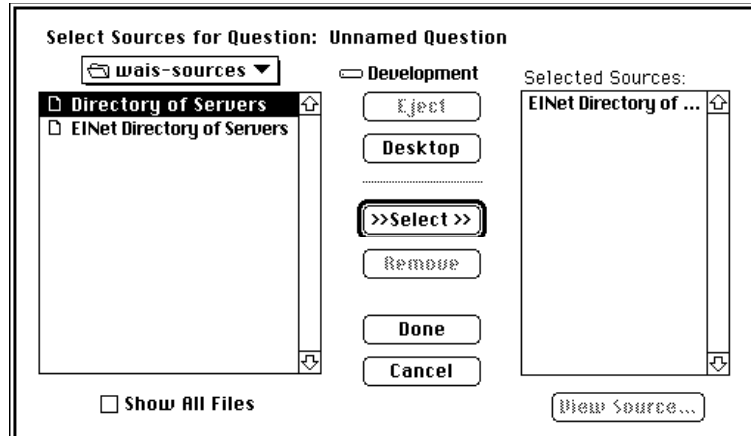


Figure 5.10.1 The Select Sources Dialog

This dialog is actually a standard open dialog with the following exceptions:

- Addition of Selected Sources list
- Addition of Select and Remove buttons
- Addition of “Show All Files” check box
- Addition of “View Source...” button
- Modification of Open button (name changed from “Open” to “>> Select >>”)

A Source is selected for use by the currently active Question by highlighting it in the file system list and clicking on the Select button (or pressing Return or Enter). A Source may be included in the selection list only once.

A Source is deselected for use by highlighting it in the Selected Sources list and clicking on the Remove button (or pressing Delete). Notice that the Remove button remains dimmed until a Source in the Selected Sources list is highlighted.

A Source is viewed by highlighting it in the Selected Sources list and clicking on the View Source button. The View Source Dialog is identical to the Edit Source Dialog, shown in Figure 5.9.1, except none of the fields are editable.

Select Sources Tips:

- You may scroll to sections of the file system list by typing the first letter of a Source. The first Source whose name begins with the specified letter will be displayed. MacWAIS will attempt to center this Source in the list display.

- You may scroll through the list using the arrow up/down keys.
 - You may select a Source by double-clicking on it in the file system list. This selection will be appended to the current Selected Sources list.
 - You may *uniquely* select a Source by shift-double-clicking on it in the file system list (or by highlighting it in the file system list and shift-clicking on the Select button, or by pressing either shift-Return or shift-Enter).
 - You may deselect a Source by double-clicking on it in the Selected Sources list (or by highlighting it and pressing Delete).
 - You may view a Source by option-double-clicking on it in *either* list.
-

The Text Menu

The Text Menu, shown in Figure 5.11.1, provides a single command, **Add Section As Feedback**. The following paragraph will describe this command in more detail.



Figure 5.11.1 The Text Menu

Add Section As Feedback

This command incorporates the *line(s)* currently highlighted in the front-most Text Document Window as Relevance Feedback in its associated Question. If the current selection has already been incorporated as Relevance Feedback, or if there is no current selection, then this item will be dimmed.

Note

If the currently active window is not a Text Document Window, then the Text Menu, itself, will be dimmed.

The Windows Menu

The Windows Menu, shown in Figure 5.12.1, allows you to select any of the currently open windows. It is populated with one static entry, **MacWAIS Help**, and dynamically populated with one entry for each of the Question and Text Document Windows that are currently open. The following paragraph will describe the **MacWAIS Help** command.



Figure 5.12.1 The Windows Menu

MacWAIS Help

This command is not currently implemented.

A numeric command-key is defined for each of the dynamic menu entries. Their number is based on the order in which they were opened. The first window is assigned ⌘-1 (command-one), the second ⌘-2, and so on. As windows are closed, their numbers are reused, but the list is not compacted.

The Question Window

The Question Window, shown in Figure 5.13.1, is the main user interface component in MacWAIS. It allows you to specify and direct queries, and operate on the “fruits” of successful queries (i.e., Result Documents).

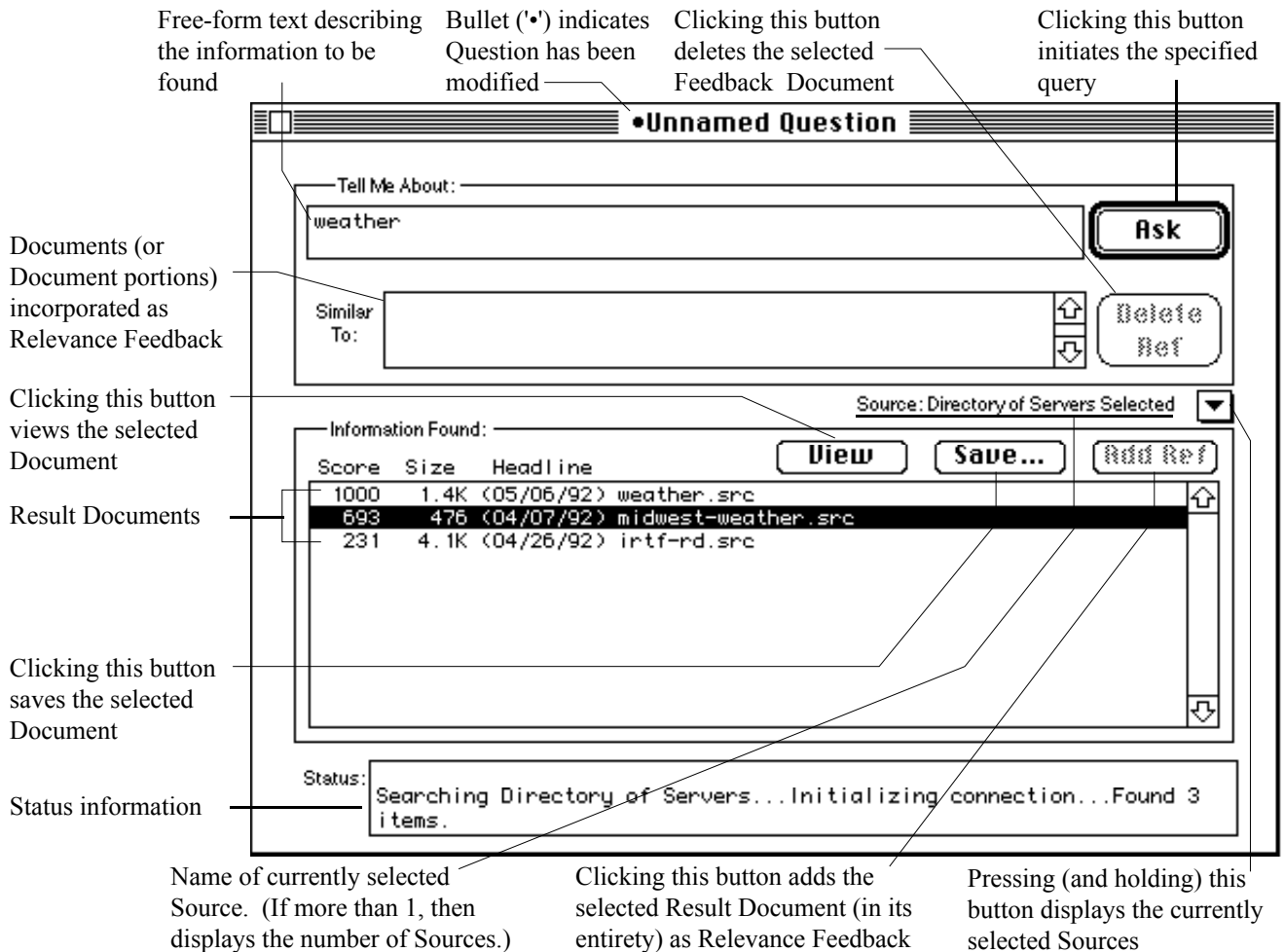


Figure 5.13.1 The Question Window

Asking a Question is really quite simple. First, open a Question Window by selecting either **New Window** or **Open Window...** from the File Menu (or by pressing \mathbb{A} -N or \mathbb{A} -O, respectively). Next, specify the free-form text comprising the query (e.g., `weather`, as shown above). Then, specify the Source(s) of whom this Question should be asked by selecting the **Select...** command from the Sources Menu (or by pressing \mathbb{A} -E). Finally, click on the Ask button (or press Enter or Return).

Documents returned as a result of the Query (or *Result Documents*) may be viewed or saved by first highlighting the desired Document and then clicking on the appropriate button.

Tip

A Result Document may be viewed by simply double-clicking on it.

For multi-type documents, the desired type must be designated before the document can be retrieved, or it's corresponding Launcher information can be edited. Document type selections are made from the Multi-Type Dialog shown later in Figure 5.14.1. For more information regarding this dialog, see the section entitled *The Multi-Type Dialog*.

If the Save button remains dimmed after highlighting a Result Document, then MacWAIS does not have the necessary information to map this Document to a Macintosh file (i.e., it doesn't know the kind of Macintosh file to create in which to store the Document's data when it is retrieved). This information may be defined via the Edit Launcher Dialog which is displayed by first selecting **Launchers...** from the Edit Menu and then clicking on the New... button in the Edit Launchers Dialog. See the section entitled *The Edit Launcher Dialog* for more details on defining WAIS-to-Macintosh file mapping information.

Tip

Launcher information may be edited by option-double-clicking on a Result Document. This has the benefit of extracting the WAIS type from the selected document.

If the View button remains dimmed after highlighting a Result Document, then one of three things is true. Either (a) the Launcher information corresponding to this WAIS type has not been defined, or (b) the Launcher has been defined but is currently disabled, or (c) you're running MacWAIS on a System 6 machine.

In case (a), you must simply define the necessary WAIS-to-Macintosh file mapping information. See the section entitled *The Edit Launcher Dialog* for more details. (Remember that you can option-double-click a Document to edit its Launcher information.)

In case (b), you must simply enable the Launcher that's already defined. See the section entitled *The Edit Launcher Dialog* for details on enabling Launchers. (Remember that you can option-double-click a Document to edit its Launcher information.)

In case (c), System 6 doesn't provide application launching. To use this feature, you *must* upgrade to System 7.

Questions may be refined by incorporating Documents as Relevance Feedback. This is done by highlighting a Result Document and clicking on the Add Ref button.

Tip

A Result Document can be added as Relevance Feedback by shift-double-clicking on it.

After a Document is added as Relevance Feedback, the Add Ref button is dimmed.

Note

Only Documents of WAIS type TEXT can be added as Relevance Feedback. Thus, the Add Ref button will be dimmed if either no Result Document is highlighted, or the highlighted Result Document is *not* of WAIS type TEXT.

Document portions can be added as Relevance Feedback from Text Document Windows. See the section entitled *The Text Menu* for more details.

The Multi-Type Dialog

The Multi-Type Dialog, shown below in Figure 5.14.1, applies only to multi-type documents (i.e., single documents with multiple types). It allows you to select one of the available types for either document retrieval or launcher editing purposes. It will appear when attempting to view, save, or edit the launchers of a multi-type document.

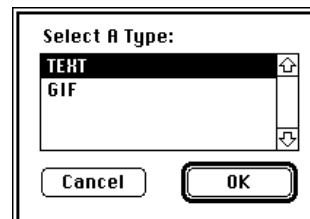


Figure 5.14.1 The Select Type Dialog

Notice that the OK button remains dim until an item is highlighted.

An item may be selected by highlighting it (by clicking the mouse on it once), and clicking on the OK button (or pressing Return or Enter).

Tip

A Multi-Type Dialog item may be selected by simply double-clicking on it.
